

Troop 30 Handbook



Troop 30 Los Altos, CA

Revised by:
Jeremy B.
Robby W.
Kyle H.
Matt H.
Brian W.



Boy Scouts of America

September 2004

TABLE OF CONTENTS

TABLE OF CONTENTS	0
INTRODUCTION	1
TROOP 30 QUICK REFERENCE	2
BRIEF HISTORY OF TROOP 30	3
AIMS OF THE BOY SCOUTS OF AMERICA	4
TROOP ORGANIZATION AND OPERATION	5
MEETINGS AND COURTS OF HONOR	8
UNIFORMS	9
CAMPING TRIPS	12
EQUIPMENT AND CLOTHING FOR CAMPING	14
SERVICE PROJECTS	16
INFORMATION RESOURCES	18
DUES AND FUNDRAISING	19
SAFETY	20
ADULT LEADERSHIP	21
Appendix A. – Troop Roster	22
Appendix B. - Directions	23
Appendix C. – Troop 30 Drivers Information	24

INTRODUCTION

This handbook was developed to provide you information about Troop 30. This guide should be used along with the Boy Scout Handbook.

You will find information about the activities of Troop 30, how the Troop operates and other general reference information.

This guide is dedicated to ASM *Phil Roemer*. Phil is a member of Troop 30 and was one of the troop's first Eagle Scouts.

Special Note to New Scouts and their Parents:

Welcome to Troop 30 and the Boy Scouts of America.

We are glad that you have chosen to become a member of our Troop. All the Scouts and adult leaders in Troop 30 hope you enjoy the fun and adventure of Scouting. We are very proud of our Scouting program. We believe it is one of the best in the area and work very hard to make it so.

We take particular pride in the number of active adult members who have received training in BSA sponsored classes and programs. The success of our Troop's program depends upon active participation by both Scouts and parents. So we invite parents to become involved. There are many opportunities for adults including Merit Badge counselors, Troop Committee membership, and Assistant Scoutmaster positions just to name a few.

So once again welcome to Troop 30 and we wish you good luck and good Scouting.

*Sincerely,
The Scouts and Adult Leaders of Troop 30*

TROOP 30 QUICK REFERENCE

Chartering Organization	Christ Episcopal Church of Los Altos, CA
Meetings	Wednesdays, Christ Episcopal Church, 1040 Borders Road, Los Altos Hills, CA 94022 7:30-8:30PM, when school is open.
Troop Committee Meetings	Third Tuesday of the month, August through June, in the troop room, from 7:30-9:00PM.
Scoutmaster	Bill Baumgartner 650-960-0497 bill_bau@pacbell.net
Committee Chair	Mike Welsh Cell-415-999-0302 mikewelsh53@hotmail.com
Cost	Annual Dues - Approx. \$73. (\$42 Annual Troop Dues, \$10 Scout registration, \$10 Adult registration, and \$11 Boys Life - optional). Specific events and outings may have additional costs. Scouts have the chance to earn money to apply towards the costs of events. Summer Camp - Camp Oljato (\$590) for two weeks. Boy Scout Handbook - all new Scouts to purchase at the Palo Alto Service Center
Required Uniform	Scout shirt w/patches, and scout pants for all troop meetings and other official functions. Pass-alongs available as supply permits. See the Scoutmaster. Troop 30 will supply the troop neckerchief.
Medical & Permission Forms	Monthly activity (trip) permission slips , including medical advisory. Class 1 medical form required for summer camp and Class 3 (full physical) required for high adventure activities.
Outdoor Equipment	Scout provides: - sleeping bag - sleeping mat

- water-proof footwear
- personal clothing and equipment (see equipment section for details)

Troop 30 provides:

- tents & tarps
- cooking stoves & equipment

BRIEF HISTORY OF TROOP 30

Troop 30 was founded in 1957. Troop 30 has always met at and been sponsored by Christ Episcopal Church. The current Scout Master is Bill Baumgartner. We meet in our own Scout troop room under the Chapel.



AIMS OF THE BOY SCOUTS OF AMERICA**Foster Citizenship****Build Character****Develop Fitness**

The programs and activities of Troop 30 are always guided by these 3 aims of Scouting. The Scout Oath, Law and Motto form Troop 30's Code of Conduct. At all Scout events and in your daily life you are expected to follow these principals.

Citizenship

Scouts are good citizens in their community, their nation and the world. The **Scout Oath** best summarizes what citizenship means.

*ON MY HONOR I WILL DO MY BEST
TO DO MY DUTY TO GOD AND MY COUNTRY
AND TO OBEY THE SCOUT LAW;
TO HELP OTHER PEOPLE AT ALL TIMES;
TO KEEP MYSELF PHYSICALLY STRONG,
MENTALLY AWAKE, AND MORALLY STRAIGHT.*

Character

Scouts are expected always to try to improve themselves. The personal traits you should develop are listed in the **Scout Law**.

*A SCOUT IS
TRUSTWORTHY, LOYAL, HELPFUL,
FRIENDLY, COURTEOUS, KIND,
OBEDIENT, CHEERFUL, THRIFTY,
BRAVE, CLEAN, and REVERENT*

You practice these by following the **Scout Slogan**, *Do a Good Turn Daily*

Fitness

A Scout prepares for whatever comes his way by learning all he can. He keeps himself strong, healthy, and ready to meet the challenges of life. The **Scout Motto** should be your guide to fitness.

BE PREPARED

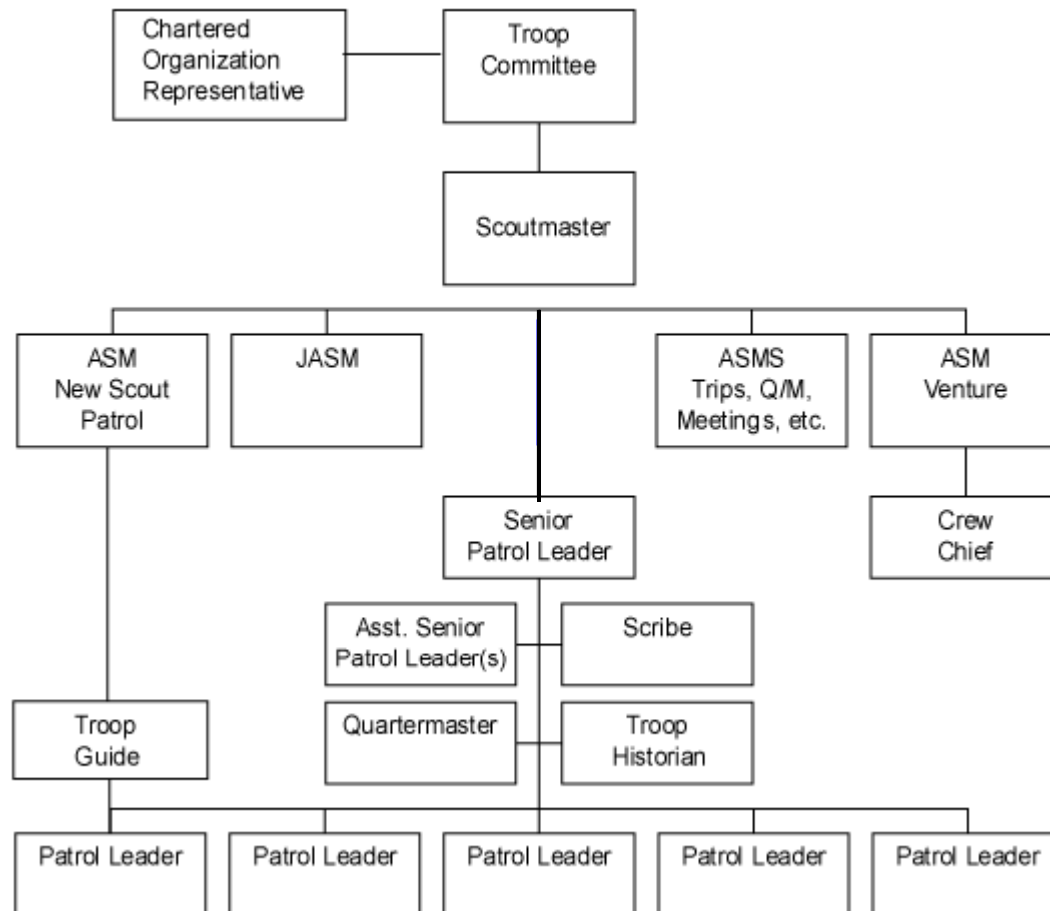
TROOP ORGANIZATION AND OPERATION

The Troop is run by the Scouts. Twice a year elections are held for leadership positions within the Troop. In late August or early September the newly elected Scouts get together for a planning session to design the Troop's Scouting program and calendar for the upcoming year. This planning includes what skills should be taught each month, where the Troop wants to go on camping trips and the service projects they plan to perform. In addition, the Scouts review the Troop 30 Goals for the new year, and with the advice of the Parents Committee, determine if High Adventure Treks can be scheduled for the following summer.

The Scouts who have been elected to leadership positions make up the **Patrol Leaders Committee** or **PLC**. This group meets monthly to review the current year's program and deal with any problems or issues that may arise.

The role of adult leaders is to help and advise the Scouts as needed.

TROOP ORGANIZATION



As the organization chart shows the Troop uses the patrol system and method. This helps you and your fellow Scouts develop leadership skills as well as the ability to work as a team. There are approximately six to eight Scouts per patrol. If you have a question or need help you should always first ask your troop guide, patrol leader or other elected leaders.

All youth leaders participate in the **Junior Leader Training (JLT)** program. This program helps prepare them for their jobs within the Troop. In addition, if a Scout wants to become Senior Patrol leader, or an Assistant Senior Patrol Leader, he must attend a Council JLTC week of training in June.

"First Class in the First Year"

For new Scouts the Troop has new Scout patrols. A *Troop Guide*, who is an experienced Scout, is assigned to each new patrol to teach and guide these younger Scouts. In

addition one of the Assistant Scoutmasters has the responsibility for helping the Scouts in these patrols earn the rank of First Class. Troop 30 likes to see new Scouts earn their First Class Rank by the end of their first year of Scouting. A First Class Scout can hold any elected office within the Troop.



MEETINGS AND COURTS OF HONOR

Troop Meetings

All the patrols meet on Wednesday at the troop room. Troop meetings are from 7:30PM to 8:30PM. Meetings start on time, so you should arrive promptly. Scouts in leadership positions stay after the meeting to discuss coming events. These discussions are usually completed by 8:45PM. **For safety reasons, Scouts should only be dropped off and picked up near the stairs leading to the troop room.** Many announcements are made at the meeting, so parents should come to the meeting and hear the announcements near the end of the meeting.

Courts of Honor

Three times during the year special meetings called *Courts of Honor* are held. They are held in October, January and June. These meetings take place at the Christ Episcopal Church Parish Hall or in the grass courtyard, and begin at 6:30PM. There is usually a potluck preceding the Court of Honor. The purpose of these meetings is to recognize Scouts who have advanced in rank and/or earned merit badges.

Since these are special occasions you should make every effort to attend. Your Parents are also invited and encouraged to attend, even if you are not receiving an award that night.

Eagle Courts of Honor

When a Scout achieves the rank of Eagle Scout, a special Court of Honor is held. It usually takes place on a weekend afternoon in the Parish Hall of the Christ Episcopal Church. Relatives of the Eagle Scout often travel to attend these events. Also Scout Executives, leaders from our council, and local dignitaries often attend.

All Scouts, as well as other Eagle Scouts, are expected to attend and participate in this special Court of Honor. The ceremony usually lasts about one hour and is followed by a reception.

UNIFORMS

You are required to have a regulation Boy Scout uniform worn in an official manner. Adult leaders are also encouraged to wear the adult Boy Scout uniform. There are two types of uniform, Class A and Class B.

Class A Uniform

The Class A uniform is the official Boy Scout uniform. The troop requires that you wear this uniform to all Scout meetings and other sanctioned Scout functions that require a Class A uniform. The Class A uniform and patches is as follows:

Required

- Scout short or long sleeve shirt
- Troop 30 neckerchief*
- Scout shorts or long pants
- Scout Socks
- Scout belt
- Troop 30 numerals
- Pacific Skyline Council shoulder patch
- Rank Patch*
- Leadership Position Patch*
- 25 Year patch
- U.S. Flag patch
- World Crest patch
- Patrol patch
- The following if applicable
 - Order of the Arrow Lodge patch
 - Den Chief Service Cord
 - Quality Unit Award for the current year only*
 - Arrow of Light
 - Religious emblems

* Patches marked with an asterisk are provided by the Troop to each Scout free of charge.

Optional

- Temporary patches (such as Camporee Patches)
- Totin' Chip patch
- World Conservation Award
- National Jamboree Patch

Troop 30 also wears a blue fleece vest with our logo embroidered. They may be purchased from the parent in charge.

The Scout Uniform

The uniform makes the Scout Troop visible as a force for good and creates a positive youth image in the community.

Wearing the uniform is an action that shows your commitment to the aims and purposes of Scouting.

The uniform gives you identity in a world brotherhood of youth who believe in the same ideals.

Class B Uniform

The class B uniform is a Boy Scout T-shirt instead of the Boy Scout shirt. Scout shorts and socks are still required items for the Class B uniform.

Where to Get Uniforms

If the cost of a uniform is a financial burden please see the Scoutmaster or the Asst. Scoutmaster for new Scouts. Often there is pass-along uniform clothing available within the Troop. There is a collection of uniforms and boots that Scouts have outgrown, not worn out, in the back of the troop room near the door. We encourage the donation of pass-alongs and their use as Scouts often quickly outgrow their uniforms and the pass-along program helps keep costs under control.

Uniforms and other Scout equipment are available from the **Scout Shop** at the Pacific Skyline Council Office on Middlefield Ave. in Palo Alto, 650-327-5900, or the new Foster City store on 1150 Chess Dr., 650-341-5633. See map to the Council office in Appendix B.

Uniform Patches

You are required to wear the patches designated under the Class A uniform requirements above. The Boy Scout Handbook provides detailed information on the proper placement of all patches and insignia. If you have any questions about the proper placement of insignia see your troop guide or Patrol leader for guidance.



CAMPING TRIPS

Camping plays a central role in Scouting. Troop 30 has a very active outdoor program that promotes camping skills.

Weekend Camping Trips

The Troop goes on a weekend trip every month from September through June. Also, there are many outings for the day and major summer treks and camping during the summer. Troop 30 supports the Stanford District and Pacific Skyline Council Camporees, Scout-O-Rama and various other activities.

In order to attend one of these trips you must have turned in permission and medical forms with the Troop Registrar when the troop recharterers in November of each year. This slip must be signed by a parent or legal guardian. These permission slips and medical forms can either be found with the registrar or the Troop or Council web sites; under forms.

The Troop meets in the Church parking lot to assemble drivers and Scouts with their gear. Upon return, we usually leave our campsites between 9:00AM and Noon on Sunday morning and arrive back in Los Altos between 10:00AM and 5:00PM depending upon the distance. Some outings come back on Monday during three day holidays. And some other trips are just for one night camping, or an activity just for a day.

Scouts are sometimes dropped off at home by the drivers on many trips. Patrol equipment that must be dropped off at the Troop Back Equipment Room will be done so immediately upon return. All patrol and Troop equipment, such as tents must be returned to the Back Equipment Room by the next Troop meeting, cleaned, oiled and dry. All tents must have poles, stakes, fly's and ground clothes properly stored before being put into the cabinet by the Back Room Quartermaster.

Active Scouts, their Parents, siblings, Legal Guardians, and Registered Scout leaders can go on a trip. High Adventure outings are usually just Scouts, Scoutleader and trained Parents.

Each patrol is responsible for the planning, purchase and cooking of their food. In new Scout patrols shopping duties should be rotated so that each Scout gets an opportunity to shop. The cost for food for a typical

weekend camping trip should be between \$5 and \$10 per Scout.

National Camper Award

Scouts who attend most Troop camping trips including the Camporees and Summer Camp will receive the National Camper Award at the October Court of Honor.

Summer Camp

Summer Camp is meant for all Scouts. It is usually held the third and fourth weeks in July. It is held at Camp Oljato on Huntington Lake in the Sierra Mountains, near Lakeshore, CA. The cost is approximately \$295 per week. We strongly encourage all Scouts who can attend to do so. This includes 1st year Scouts who joined the Troop the previous Spring. The second week of the two, is specifically for the new Scouts.

If the expense will cause a hardship, the Troop can provide assistance through camperships provided by the Council. Parents should contact the Scoutmaster or the Troop Committee Chairperson. All financial assistance is handled discreetly and confidentially.

Summer Camp is a lot of fun. There is swimming, boating, opportunities to earn a variety of merit badges and just Camping in the High Sierras with your fellow Scouts.

High Adventure Trips and Jamborees

In August the Troop organizes high adventure trips for older and more experienced Scouts. Past trips have included the 60 mile Canoe trip on the Lewis and Clark Trail of the South Dakota, in New Mexico, 50 Sierras, three Puget Sound and the Jamboree at Fort AP DC.



Missouri River in Philmont Scout Ranch miler hikes in the masted sailing on National Scout Hill near Washington,

EQUIPMENT AND CLOTHING FOR CAMPING

This section is intended as a supplement to the information in Chapter 2 of the Boy Scout Handbook.

Anyone who has lived in California knows how diverse the weather is. Also we may see sunny skies in Los Altos when we leave on a trip only to find cold rainy weather in Boulder Creek when we arrive there an hour later.

Nothing can spoil a camping trip more than being uncomfortable due to cold or heat. The following tips are intended to provide you with some guidelines for the proper clothing and equipment for extreme weather camping.

1. The single most important item of clothing is a pair of **long underwear**. The best fabric is **polypropylene**. It is sometimes called thermastat polyester or goes by brand names such as Thermax®, Polartec® and Capilene®. **DO NOT** buy cotton long johns. Once wet or just moist from perspiration cotton will chill you. Polypropylene, however, will retain heat even when wet, just like wool.

You should buy medium or expedition weight underwear. Campmor, a large mail order camping supply company, is a good source for outdoor clothing and camping equipment (call 1-800-CAMP MOR) for a free catalog or visit their website www.campmor.com. The REI is also a good source for clothing.

2. The next item is a few good pair of socks. You will need to wear two pairs at a time. The under layer for wicking moisture away from your feet, and a thick synthetic sock for warmth. **NO COTTON!**
3. A pair of waterproof mittens (better than gloves) and a warm hat complete the first layer of clothing.
4. As much as possible chose the newer synthetics, such as fleece, for additional layers. **Avoid cotton** as much as possible. You shouldn't wear sweat pants or sweat shirts because they are almost always made of cotton
5. A warm sleeping bag along with a sleeping pad, is essential for cold weather tent camping. Sleeping bags should have a nylon shell with either down or synthetic fill with a rating of 20° F or colder. **Don't bring cotton or cotton lined bags!**

In addition to these essentials, BE PREPARED for changes in weather by using layers of clothing. For example, you should bring fleece and windbreaker jackets for cool fall evenings and frosty mornings. Talk with older Scouts and adults for additional guidance.

Many other items are needed for camping and backpacking, car camping, snow camping to long term summer camp. These items can be found in other areas of this web site.

SERVICE PROJECTS

Living the Scout Oath and Law means that we help other people. Troop 30 is committed to the ideals contained in the Oath and Law and perform the following service projects each year.

Scouting for Food

This is a national "good turn" project in which Scouts collect food for distribution to local food pantries. This national program began in 1988 and is now the largest food collection program in the United States.

All Boy Scout Troops and Cub Packs of the Council participate in this project each year. Each year the Los Altos Scouts collect between 5 and 6 tons of food. It takes place in November over two weekends. The first week the Scouts distribute bags to individual homes. The following week the Scouts collect the bags and deliver them to the food drop off point in town.

Uniforms are worn for this project.

Flag Ceremony for City Council Meetings

At the weekly City Council Meetings throughout the year, volunteer Scouts will do a flag ceremony and stay for much of the business meeting to meet requirements for Merit Badges. Scouts should wear their class A uniform for this event.

Flag Placement at National Cemetery for Memorial Day

Scouts meet early at the Troop Room, then travel to Coloma, CA, which is just south of San Francisco, to place small flags at each grave stone of a War Veteran at the National Cemetery. Class A uniform is required for this event.

Church Cleanup

Troop 30 cleans the grounds of the property of Christ Episcopal Church every year. They are our sponsoring Chartered Organization and we appreciate their support.

Eagle Projects

In order for a Scout to attain the rank of Eagle, he must plan, organize and complete an Eagle Service Project. An important part of the project is to demonstrate leadership by recruiting and directing other Scouts in helping with the project.

You are expected to volunteer your time to help your brother Scout when he calls on you. These projects are usually fun and count toward your service hour requirement.



INFORMATION RESOURCES

A key to the success of Troop 30's program is good communication. The Troop provides the following information resources.

Troop 30 Eagle's Aerie

This is the troop's monthly newsletter. It is sent out at the beginning of each month and contains articles written by the Scouts as well as other useful information about upcoming program events. The Troop Historian is the editor of Eagle's Aerie and is assisted by an adult advisor.

www.troop30.us

The Troop maintains an active web site. The site contains a wealth of information about the Troop and its activities. The site has a public area that is accessible through the web address above. In addition there is a *member's only* area that requires a user id and password. Upon joining the troop you will be given a user id, password and instructions on accessing this area.

Troop Library

The Troop Scribe maintains a library of merit badge booklets which you can borrow a booklet while you are working on a merit badge. You are encouraged to donate merit badge booklets that you have purchased and no longer need.

The Troop will also provide appropriate training guides and manuals for youth leadership courses.

DUES AND FUNDRAISING

Registration Dues

Annual Dues are \$73 for Scouts and \$10 for adult leaders. Dues are due by November 15 and collected by the Troop Registrar. Checks should be made out to Troop 30. The dues include a subscription to Boy's Life Magazine.

At least 27% of the dues that the Troop collects goes directly to Pacific Skyline Council or the BSA National Office. The Council also seeks contributions through its **Friends of Scouting Campaign**. Funds from this program help support council wide activities, staff salaries and other costs.

Fundraising

The only fundraising event each year is the annual Popcorn Sales put on by the Council. The Scouts and Troop can earn up to 40% of the total sales. Each Scout will get a high percentage of the commission and the troop keeps a smaller sum for purchasing camping supplies. The money will be kept in the Scout's own account with the troop to offset his summer camping fees.

The money that **YOU** help raise through this activity allows the Troop to go on trips, buy Troop equipment and pay for other Troop costs, while the Scout's personal fund can be used to pay his fees for Camp Oljato.

SAFETY

The most important aspect of any Scouting activity is that it is safe. Troop 30 shows its belief in safe Scouting through the following practices.

Two-Deep Leadership

In any Scouting activity there MUST be at least two registered adult leaders present.

Tent Rules

No Scout is allowed in an adult tent other than his parent's or legal guardian's. Scouts tent with scouts of similar age.

Youth Protection Training

All adult leaders are required to complete the council sponsored Youth Protection training program every two years.

Driver Safety

The troop has implemented a driver safety program. All adults who volunteer to drive must familiarize themselves with the BSA safe driving rules. A copy of this material is contained in Appendix C.

In any activity that requires a medical form or a permission form, that form will always be kept in a binder that is carried with each vehicle on an outing. A Drivers List with Insurance proof is also carried in each binder.

Totin' Chit

You are not allowed to use any wood tools including a pocketknife, until you have completed the wood tools training and received your Totin' Chit.

ADULT LEADERSHIP

Trained Adult Leaders

All adult leaders who act in the capacity of Assistant Scoutmasters are expected to complete the Scoutmaster's Basic Program and Youth Protection.

Troop 30 also encourages adult leaders to complete the advanced training program called Wood Badge. Other special training includes Advanced Outdoor Awareness Training, Safety Afloat and Safe Swim Defense, Merit Badge Counselor, Climb Safely, Rangemaster and Winter Safety. A number of leaders also act as trainers and many are Eagle Scouts.

Eight of the adult leaders also attended the 2003 Philmont Scout Reservation for two weeks thus demonstrating a strong commitment to the Scouting program by giving up their summer vacations to go on this event.

Troop Committee

The purpose of the Troop Committee is to oversee the Troop's programs. They are responsible for selecting a Scoutmaster and helping the Scoutmaster and the Assistant Scoutmasters by taking care of the administrative aspects of Troop operations. This frees the Scoutmaster and Assistants to work with the boys.

The Committee strongly encourages parents who are interested in possible Committee membership to contact the Committee Chairperson.

The Committee meets on the third Tuesday of the month at 7:30 in the Troop Room. Anyone connected with the Troop is welcome to attend these meetings.

Merit Badge Counselors

There are 122 merit badges offered by the Boy Scouts. The Troop is always eager to find adults who can act as merit badge counselors. The only requirement is that you have an appropriate proficiency in the merit badge topic and the ability to teach and mentor adolescents.

To find out more about the merit badges offered, see the Scoutmaster or one of the Assistant Scoutmasters.

Appendix A. - Troop Roster

Note: Names Left Blank on Purpose

Scouts

Jones	John	123 Main St.	555-1212

Adult Leaders

Jones	Jim	123 Main St.	555-1212	ASM - New Scouts

Troop Committee

Smith	Jane	5 Elm St.	555-1234	Chairperson

Appendix B. - Directions

Directions to Pacific Skyline Council Palo Alto Office and Scout Shop

1305 Middlefield Road
Palo Alto, Ca 94301
650-327-5900

[Directions & Map Here](#)

Directions to Pacific Skyline Council Foster City Office and Scout Shop

1150 Chess Drive
Foster City, CA 94404
650-358-0588

[Directions & Map Here](#)

Directions to Camp Oljato

Lakeshore, CA 559-893-3393

[Directions & Map Here](#)

Directions to Boulder Creek Scout Reservation

250 Scout Ranch Road

Formerly & Physically 14586 Bear Creek Road

Boulder Creek, CA 95006

831-338-3636

[Directions & MAP HERE](#)

Appendix C. - Troop 30 Drivers Information



Troop 30
Los Altos, California

Driver's Trip Packet

This packet was designed to inform and guide you whenever you transport Scouts from Troop 30. You should have the following items in this packet:

- Letter from the BSA National Health and Safety Committee
- *The Guide to Safe Scouting*
- Motor Vehicle Safety Checklist
- Emergency contact list
- Directions and/or map to your destination
- Trip permission slips and appropriate medical certificates for all Scouts traveling in your vehicle

**BOY SCOUTS OF AMERICA**

National Office
1325 West Walnut Hill Lane
P.O. Box 152079, Irving, Texas 75015-2079
214-580-2000

February 1995

TO: ALL BSA DRIVERS

Although Scouting has achieved an extraordinary record for safety in all areas of activity, the BSA National Health and Safety Committee in February 1995, recognized a need for increased attention to vehicle safety issues and urges all volunteer leaders, professional staff and youth to study and adhere to BSA rules and procedures pertaining to vehicle safety.

The incident rate for vehicle related accidents in connection with Scouting activities remains substantially below the national average, but an upward trend in the accident rate over the last 3 years demonstrates that increased attention to vehicle safety issues is appropriate.

The BSA rules and procedures pertaining to vehicle safety are set forth in the *Tours and Expeditions* booklet, No. 33737, pages 22-24.

Areas of particular concern, based on recent statistics, include:

- Strictly comply with all state and local traffic laws including posted speed limits.
- Drive defensively. Watch other traffic, take no chances, and use extra caution. Remember aggressive drivers take unnecessary risks.
- Follow the "driver qualifications" regulations on the tour permit, and limit drive time according to BSA specifications.
- Limit number of passengers to number of seats with safety belts. All must remain in their seats with belts secured. No one rides outside the passenger compartment or cab of any vehicle.
- Drive with headlights on. The extra moments of visual contact the headlights provide may be enough to prevent some accidents.
- All drivers should review, understand and commit to compliance with all BSA rules and procedures pertaining to vehicle safety.
- Let's all drive with extreme care, watch out for the other guy, and get them home safe and sound.

National Health and Safety Committee

XII. Transportation

Established public carriers - trains, buses, and commercial airlines-are the safest and most convenient way for groups to travel. Chartered buses usually are the most economical transportation for groups of twenty or more. It may be necessary for small groups to travel in private automobiles; however, the use of chartered equipment from established rail, bus, and airline companies is strongly recommended. The advantages are many. These companies have excellent safety records because of their periodic inspections and approved health and safety procedures.

References: Cub Scout Leader Book, Scoutmaster Handbook, Troop Committee Guidebook, Exploring Reference Book, and Tours and Expeditions. NO. 3373

Automobiles

It is essential that adequate, safe, and responsible transportation be used for all Scouting activities. Because most accidents occur within a short distance from home, safety precautions are necessary, even on short trips.

General guidelines are as follows:

1. **Seat belts are required for all occupants.**
2. **All drivers must have a valid driver's license that has not be suspended or revoked for any reason. If the vehicle to be used is designated to carry more than fifteen persons, including the driver (more than ten persons, including the driver, in California), the driver must have a commercial driver's license (CDL).**
3. **An adult leader (at least 21 years of age) must be in charge and accompany the group.**
4. **The driver must be currently licensed and at least 18 years of age. Youth member exception: When traveling to an area, regional, or national Boy Scout activity or any Explorer event under the leadership of an adult (at least 21 years of age) tour leader, a youth member at least 16 years of age may be a driver, subject to the following conditions:**
 - a. **Six months' driving experience as a licensed driver (time on a learner's permit or equivalent is not to be counted)**
 - b. **No record of accidents or moving violations.**
 - c. **Parental permission granted to the leader, driver, and riders.**
5. **Passenger cars or station wagons may be used for transporting passengers, but passengers should not ride on the rear deck of station wagons.**
6. **Trucks may not be used for transporting passengers except in the cab.**
7. **All driving, except for short trips, should be done in daylight.**
8. **All vehicles must be covered by automobile liability insurance with the limits that meet or exceed requirements of the state in which the vehicle is licensed. It is recommended that coverage limits are at least \$50,000/\$30,000/\$50,000. Any vehicle designated to carry ten or more passengers is required to have limits of \$30,000/\$500,000/\$30,000.**
9. **Do not exceed the speed limit.**
10. **Do not travel in convoy.**

Driving time is limited to a maximum of 12 hours and must be interrupted by frequent rest, food, and recreation stops. If there is only one driver, the driving time should be reduced and stops should be made more frequently.

Motor Vehicle Checklist

Basic Safety Check

- Seat belts for every passenger?
- Tire tread okay?
- Spare tire?
- Jack?
- Brakes okay?
- Windshield wipers operate?
- Fluid in reservoir?
- Current inspection sticker?
- Headlights and turn signals operating?
- Rearview mirrors?
- Exhaust system okay?

Additional Safety Check

- Flares for emergencies?
- Fire extinguisher?
- Flashlight?
- Tow chain or rope?
- First-aid kit?

Departure Check

- Vehicle packed so equipment does not inhibit visibility?
- Equipment stowed to avoid shifting or projection in the event of a sudden stop or collision?
- All Scouts wearing seat belts?
 - Driver has permission slips and directions?